

SOUTH BRIDGE GUAYAQUIL (44,22 KM) SCHEDULE

COMPONENT	SINCE
Start of the international public tender	04 October de 2018
Presentation of Offers	15 May 2019
Evaluation of Offers	15 June 2019
Negotiation between the Delegating Entity and the Applicant Company	15 July 2019
Award	30 July 2019
Contract signature	30 September 2019

In the process of international public tender

MTOP

MINISTRY OF
TRANSPORT AND PUBLIC WORKS OF ECUADOR



ROAD SANTO DOMINGO – BUENA FE (113 Km)

MANAGEMENT MODEL

Delegation to the private sector

TOTAL INVESTMENT USD

USD. 591,04 MM (CAPEX) 260,54 MM (OPEX 330,50 MM)

PROJECT CONCEPT

Extension to 4 lanes, 2 Toll Stations, 30 Years Concession

BENEFITS

30 - 40 minutes reduction in travel time

In the process of international public tender

MTOP

MINISTRY OF
TRANSPORT AND PUBLIC WORKS OF ECUADOR



ROAD SANTO DOMINGO – BUENA FE (113 Km) SCHEDULE

COMPONENT	SINCE
Start of the international public tender	29 October de 2018
Presentation of Offers	30 April 2019
Evaluation of Offers	20 June 2019
Negotiation between the Delegating Entity and the Applicant Company	10 July 2019
Award	25 July 2019
Contract signature	26 August 2019

In the process of international public tender

MTOP

MINISTRY OF
TRANSPORT AND PUBLIC WORKS OF ECUADOR



ROAD BUENA FE – BABAHOYO – JUJAN (131 Km)

MANAGEMENT MODEL

Delegation to the private sector

TOTAL INVESTMENT USD

USD. 726,08 MM (APEX) 317,38 MM; (OPEX 408,70 MM)

PROJECT CONCEPT

Extension to 4 lanes, 2 Toll Stations, 30 Years Concession

BENEFITS

30 - 40 minutes reduction in travel time

In the process of international public tender

MTOP

MINISTRY OF
TRANSPORT AND PUBLIC WORKS OF ECUADOR



ROAD BUENA FE – BABAHOYO – JUJAN (131 Km) SCHEDULE

COMPONENT	SINCE
Start of the international public tender	29 October de 2018
Presentation of Offers	06 May 2019
Evaluation of Offers	25 June 2019
Negotiation between the Delegating Entity and the Applicant Company	15 July 2019
Award	31 July 2019
Contract signature	31 August 2019

In the process of international public tender

MTOP

MINISTRY OF
TRANSPORT AND PUBLIC WORKS OF ECUADOR



GROUP 2.

DELEGATIONS FOR ROAD REHABILITATION, OPERATION, PERIODIC MAINTENANCE AND ROUTINE MAINTENANCE 2nd semester 2019

N°	ROAD NAME	YEARS	LENGTH KM	AADT	CAPEX M USD	OPEX M USD	TOTAL M USD
GRUPO 2							
1	LOJA - CATAMAYO	10	57	6515	\$ 0,6	\$ 27	\$ 28
2	LA CADENA - JIPIJAPA - LA PILA - MONTECRISTI		98	7421	\$ 1,5	\$ 47	\$ 48
3	CUENCA - AZOGUES - BIBLIÁN		42	8000	\$ 70	\$ 95	\$ 165
4	PIFO - Y DE BAEZA		77	9185	\$ 0,6	\$ 46	\$ 46
5	AMBATO - GUARANDA - BABAHOYO		212	5351	\$ 2,5	\$ 46	\$ 49
6	REDONDELA CUMBE- Y DE CORRALITOS		140	3272	\$ 1,2	\$ 62	\$ 64
TOTAL			626 km		\$ 76,5	\$ 324	\$ 401

GROUP 3.

DELEGATIONS FOR ROAD REHABILITATION, OPERATION, PERIODIC MAINTENANCE AND ROUTINE MAINTENANCE 1st semester 2020

N°	ROAD NAME	YEARS	LENGTH KM	AADT	CAPEX M USD	OPEX M USD	TOTAL M USD
GRUPO 3							
1	LATACUNGA - QUEVEDO	10	171	5821	\$ 3,6	\$ 78	\$ 82
2	AMBATO - PUYO		94	9000	\$ 2,3	\$ 45	\$ 47
3	PEDERNALES - ROCAFUERTE		161	4139	\$2,1	\$ 40	\$ 42
TOTAL			426 km		\$ 7,9	\$ 163	\$ 171

* Projects in the process of structuring, gathering technical information of brokers, basic engineering studies.

GROUP 4.

DELEGATIONS FOR ROAD REHABILITATION, OPERATION, PERIODIC MAINTENANCE AND ROUTINE MAINTENANCE 2nd semester 2020

N°	ROAD NAME	YEARS	LENGTH KM	AADT	INVERSTMENT M USD	OPERATION AND MAINTENANCE M USD	TOTAL M USD
GRUPO 4							
1	MANTA - QUEVEDO	10	148	1957	\$ 1,9	\$ 33,6	\$ 35,5
2	Y DE SALINAS - SAN LORENZO		152	2379	\$ 1,9	\$ 34,3	\$ 36,2
TOTAL			301 km		\$ 3,8	\$ 67,9	\$ 71,7

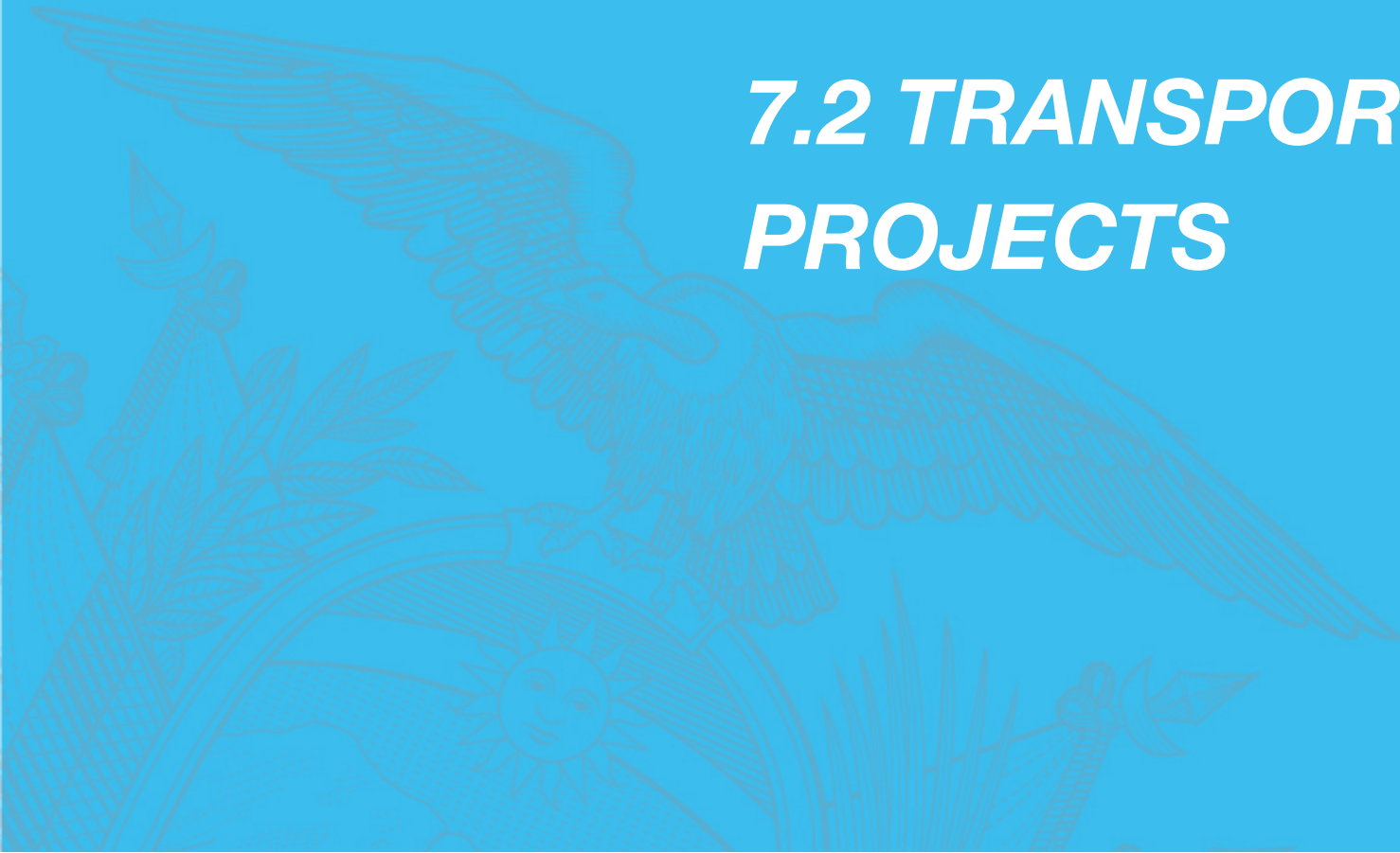
* Projects in the process of structuring, gathering technical information of brokers, basic engineering studies.



EL
GOBIERNO
DE TODOS



7.2 TRANSPORT MANAGEMENT PROJECTS



FFCC "TREN PLAYERO": DAULE – GUAYAQUIL – POSORJA PHASE I (132,68 km)

MANAGEMENT MODEL

Delegation to the private sector

TOTAL INVESTMENT USD

USD 952,27 (CAPEX 835,79 – OPEX 116,48)

PROJECT CONCEPT

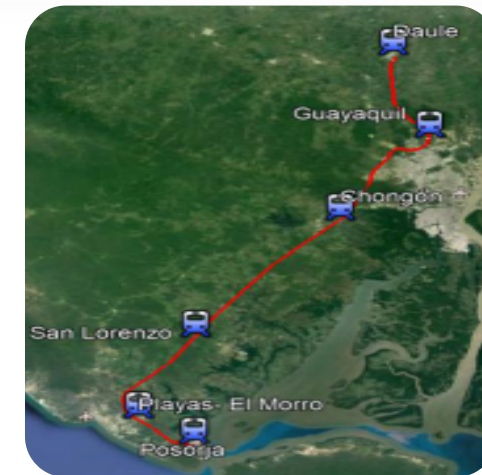
Freight and passengers train that will travel by the main cities of the Ecuadorian coast

BENEFITS

*Reduced travel time
Ecological transport system*

International public tender 10 May 2019

MINISTRY OF
TRANSPORT AND PUBLIC WORKS OF ECUADOR



FFCC “TREN PLAYERO”: DAULE – GUAYAQUIL – POSORJA PHASE I (132,68 km) SCHEDULE

COMPONENT	SINCE
Start of the international public tender	10 May 2019
Presentation of Offers	11 July 2019
Evaluation of Offers	17 October 2019
Negotiation between the Delegating Entity and the Applicant Company	19 November 2019
Award	20 December 2019
Contract signature	20 December 2019

FFCC QUITO – GUAYAQUIL (486,5 km)

MANAGEMENT MODEL

Delegation to the private sector

TOTAL INVESTMENT USD

USD 4.270 MM

PROJECT CONCEPT

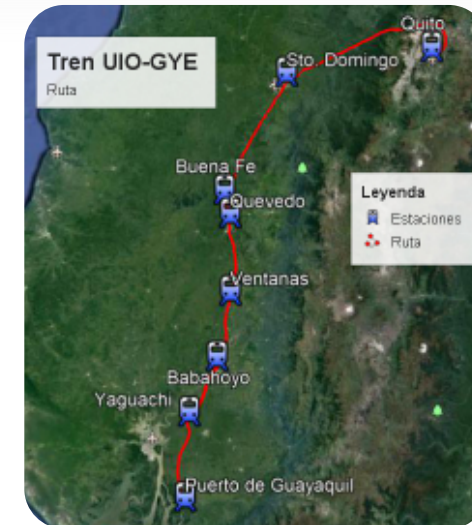
Freight and passengers train that will connect the main cities of Ecuador. 35 years delegation

BENEFITS

Reduced travel time, ecological transport system, freight transportation from the capital to the main port

International public tender Semester 2 2019

MINISTRY OF
TRANSPORT AND PUBLIC WORKS OF ECUADOR



FFCC QUITO – GUAYAQUIL (486,5 km) SCHEDULE

COMPONENT	SINCE
Start of the international public tender	31 marzo 2020
Award	23 junio 2020
PPP starts	04 agosto 2020

METROFÉRICO: QUITO – TABABELA AIRPORT (22km)

MANAGEMENT MODEL

Delegation to the private sector

TOTAL INVESTMENT USD

MUSD 1.524 (CAPEX 660 – OPEX 864)

PROJECT CONCEPT

Phase 1: La Carolina - Ruta Viva (Distance 11km, 7 stations)

Phase 2: Ruta Viva - Aeropuerto Tababela (Distance 11 km, 3 stations)

BENEFITS

Transfer in 44 minutes, time travel savings, connectivity, accessibility

International public tender 2nd Semester 2019

MINISTRY OF
TRANSPORT AND PUBLIC WORKS OF ECUADOR



ESMERALDAS PORT

MANAGEMENT MODEL

Delegation to the private sector

PORT DESCRIPTION

Multipurpose seaport located in the city of Esmeraldas. Strategic geographical location, the closest port to the Panama Canal (latitude of 01 ° 01 '45 N and longitude of -79 ° 39'6 O), allowing interoceanic traffic of large vessels.

It has three docks, one of services with a draft of 11.5 meters, with direct access from the open sea, sheltered in a dock, which allows great maneuverability and docking of ships, with qualified towing and pilotage services.

PORT INFRASTRUCTURE

Main dock 350 m long with a depth of 11.5 mt.

Service dock 105 m long with a depth of 6.5 mt.

Ro - Ro dock 20 m long for loading and unloading.

Storage for containers, vehicles, general cargo, bulk (solids and liquids) and dangerous cargo

4 covered warehouses

6 Operational scales

Power plant

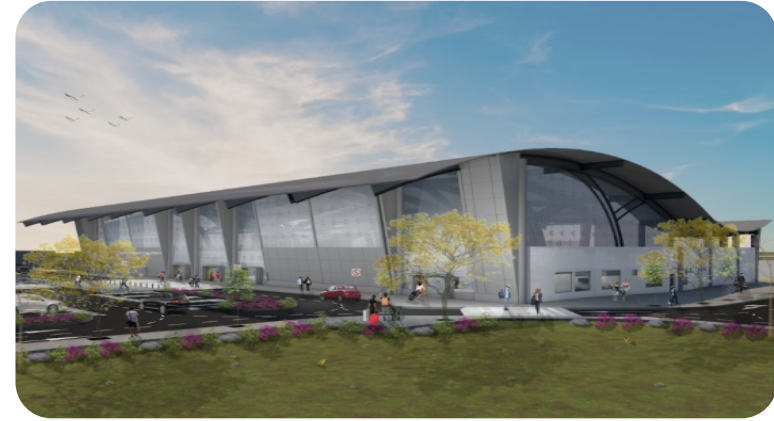
72 Reefer Tomas



CARGO TRAFFIC 2018 (metric tons)

General Cargo	Container Cargo	Solid Bulk Cargo	Liquid Bulk Cargo	Cars
30.943	69.262	239.611	165.588	40.867

INTERNATIONAL AIRPORT ELOY ALFARO - MANTA



MANAGEMENT MODEL

Delegation to the private sector

TOTAL INVESTMENT USD

To define

PROJECT CONCEPT

Airport management

BENEFITS

Efficiency in the administration of the airport

- **KAC will submit a proposal for airport delegation in the next days**

AIROPORT STATISTICS						
NUMBER OF PASSENGERS (INCOME AND DEPARTURES)						
YEAR	2013	2014	2015	2016	2017	2018
Manta	291.709	270.854	272.197	209.211	176.089	165.951
NUMBER OF MOVEMENTS (INCOME AND DEPARTURES)						
YEAR	2013	2014	2015	2016	2017	2018
Manta	4.980	4.003	3.793	3.339	2.773	2.359
TRANSPORTED LOAD TM						
YEAR	2013	2014	2015	2016	2017	2018
Manta	337,21	3033,19	143,93	272,43	127,05	108,77

TRAFFIC MONITORING AND SPEED CONTROL

MANAGEMENT MODEL

Delegation to the private sector

TOTAL INVESTMENT USD

USD. 122,06 MM (CAPEX 72,31 - OPEX 49,75)

PROJECT CONCEPT

*Implementation of a system to control and monitor the traffic
Flow and car's speed*

BENEFITS

Decrease of accidents in roads

**International public tender
In the pre-contractual process**

MINISTRY OF
TRANSPORT AND PUBLIC WORKS OF ECUADOR



CONTROL OF WEIGHTS, DIMENSIONS AND ADJUSTMENT OF HEAVY LOAD VEHICLES

MANAGEMENT MODEL

Delegation to the private sector

TOTAL INVESTMENT USD

USD. 37,08 MM (CAPEX 11,46 -OPEX 25,62)

PROJECT CONCEPT

Control of Weights, Dimensions and Capacity of Heavy Load Vehicles. 10 year delegation

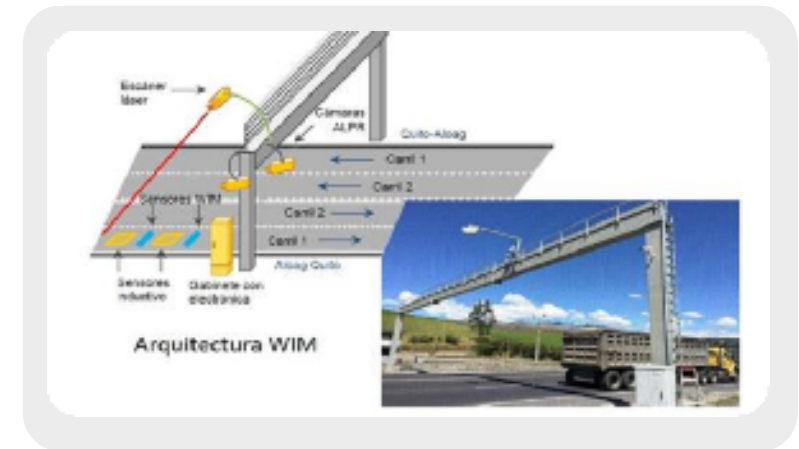
BENEFITS

Preserve in good condition the state road network

Reduce maintenance costs

International public tender 1st Semester 2019

MINISTRY OF
TRANSPORT AND PUBLIC WORKS OF ECUADOR



LOGISTIC PLATFORM – SANTO DOMINGO

MANAGEMENT MODEL

Delegation to the private sector- sectional government project

TOTAL INVESTMENT USD

USD. 153 MM (CAPEX 46 - OPEX 107)

PROJECT CONCEPT

Construction of Logistics Platform to boost economic activities. 10 year delegation

BENEFITS

Competitivity, international trading

International public tender 1st Semester 2019

MINISTRY OF
TRANSPORT AND PUBLIC WORKS OF ECUADOR





EL
GOBIERNO
DE TODOS

MINISTRY OF
TRANSPORT AND PUBLIC WORKS OF ECUADOR

THANK YOU