

The Development of MAC (Multifunctional Administrative City)

Panki Cho



CONTENTS

1. Background
2. Urban Index
3. Development Procedure
4. Urban Planning

1. Background

1. Background

- Intensified urban problems such as economy, traffic and environment due to excessive overcrowding in the Seoul Metropolitan Area.
- Construction of a new Administrative Capital following President Roh Moo-Hyun election pledge.

2. Purpose

- The need for a shift in strategy to build a self-sufficient grounds in regions, by breaking away from passive policies that inhibit concentration in the Seoul Metropolitan Area.
- Leading the Balanced National Development and Creating Sustainable Model City

National Redevelopment based on Innovation-driven Development Paradigm



1. Background

History

2005.3

- Enacted the Special Act on Multifunctional Administrative City Construction

2005.4

- Establishment of the Multifunctional Administrative City Construction Committee

2005.5

- Designated Korea Land & Housing Corp.(LH) as Project Developer

2006.1

- Establishment of National Agency for MAC Construction

2. Urban Index

1. Overview

- Purpose : National Balanced Development
- Budget : \$1.9Billion(Government \$0.7Billion + LH \$1.2Billion)
- Target : Population 500,000 by year 2030

“Constructing an Multifunctional Administrative City”

Relocating Central
Government Agencies,
Urban infrastructure

Self-sufficiency
function

Completing a Self-sufficient
City

Phase 1

Phase 2

Phase 3



2. Urban Index

2. Mayor Index



Agencies

- Central Government Agencies(20), Related Agencies(20) Employees(104,773 persons)
 - National Research InstitutionsK(15) Employees (3,545persons)
-



Population

- Population 369,319(Year 2021)
-



House

- 200,000 Houses by year 2030
-

2. Urban Index

2. Mayor Index



Culture

- National Library, Convention Center, President Record Center, Art Center, Museum Complex



Parks

- Green Area Ratio : 52.4 % , 55 Parks
- Central Park, National Arboretum
- Green Area Per Population : 76.2m²



Welfare

- Community Center of each life zone(6)
- 22 Community Centers per 20,000 to 30,000 population

3. Development Procedure

1. Designation of Construction Area



2. Sejong City and its Administrative districts



3. Development Procedure

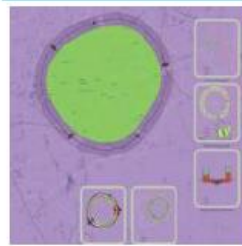
3. Organization

Organizational Chart



3. Development Procedure

4. International Competition for Urban Concept



뒤리그(스위스) : 'The Orbital Road'

- 장남평야·대명들을 그대로 존치한 환상형(Ring) 도시구조
- 대중교통지향적이고 도시기능의 효율성을 극대화
- 도시기능을 5개의 거점으로 분산 배치



페레아(스페인) : 'The City of Thousand Cities'

- 예정지역 전체를 아우르는 환상형 도시구조
- 다각적인 기술적 검토에 기반하여 개발과 보전이라는 명제를 명쾌하게 해석
- 사회적 특권과 차별이 없는 민주적 도시구조
- 도시의 기능이 분산된 위계 없는 도시



송복섭(한국) : 'Thirty Bridges City'

- 고밀도의 도시를 지향하여 원형의 중심부를 집중 개발하고 그 외곽은 자연 상태를 유지
- 30개의 다리 위에 정부청사 및 공공시설 등을 배치



아우렐리(이태리) : 'A Grammar for the City'

- 도시를 구성하는 방식과 절차를 제시
- 기존 신도시의 도로에 의한 도시구조 결정방식을 탈피하여 구체적 용도를 정하지 않은 기하학적 벽체에 의해 도시골격을 형성



김영준(한국) : 'Dichotomous City'

- 도시건설 과정에 대한 논의에 초점
- 실질적인 도시 마스터플랜보다는 정보들을 나열하고 도시와 자연의 조화 등 이질적인 현상들을 중첩
- 도시개념을 구체적으로 조직해내는 원칙으로 활용 가능

3. Development Procedure

5. Construction Phase



〈2007〉



〈2010〉



〈2012〉



〈2015〉

3. Development Procedure

6. Present



3. Development Procedure

6. Present



2011 First Town



2012 Relocation of Government Agencies



2013 Relocation of Research Institutes

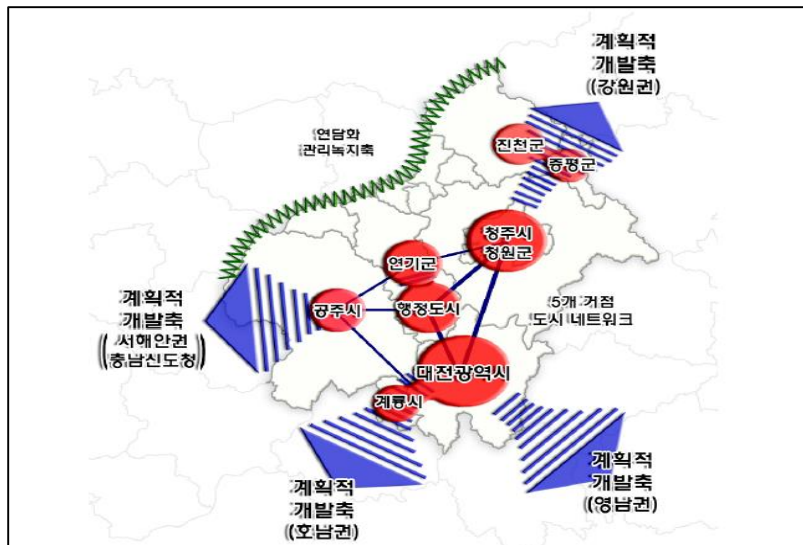


Public Transportation(BRT) and Hospital

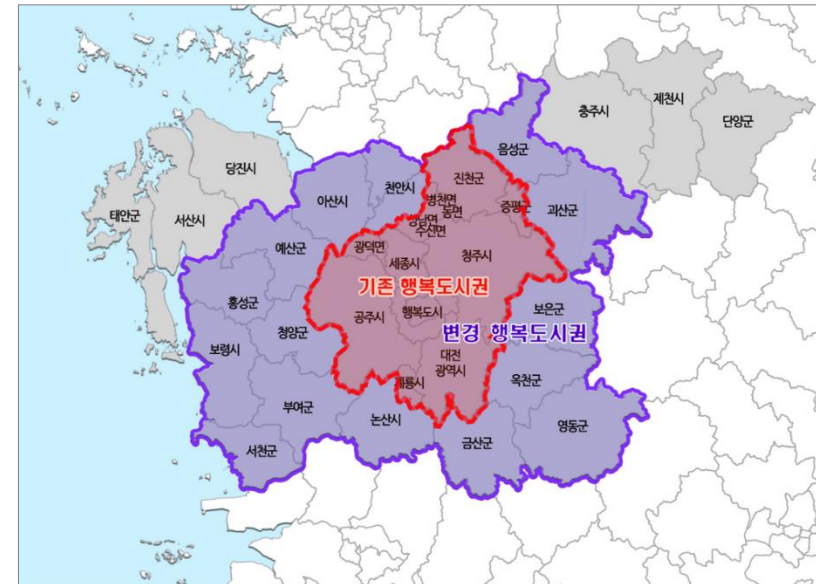
4. Urban Planning

1. Metropolitan City Region Planning

MAC Metropolitan Planning(2007.06)



2040 (Establishing presently)

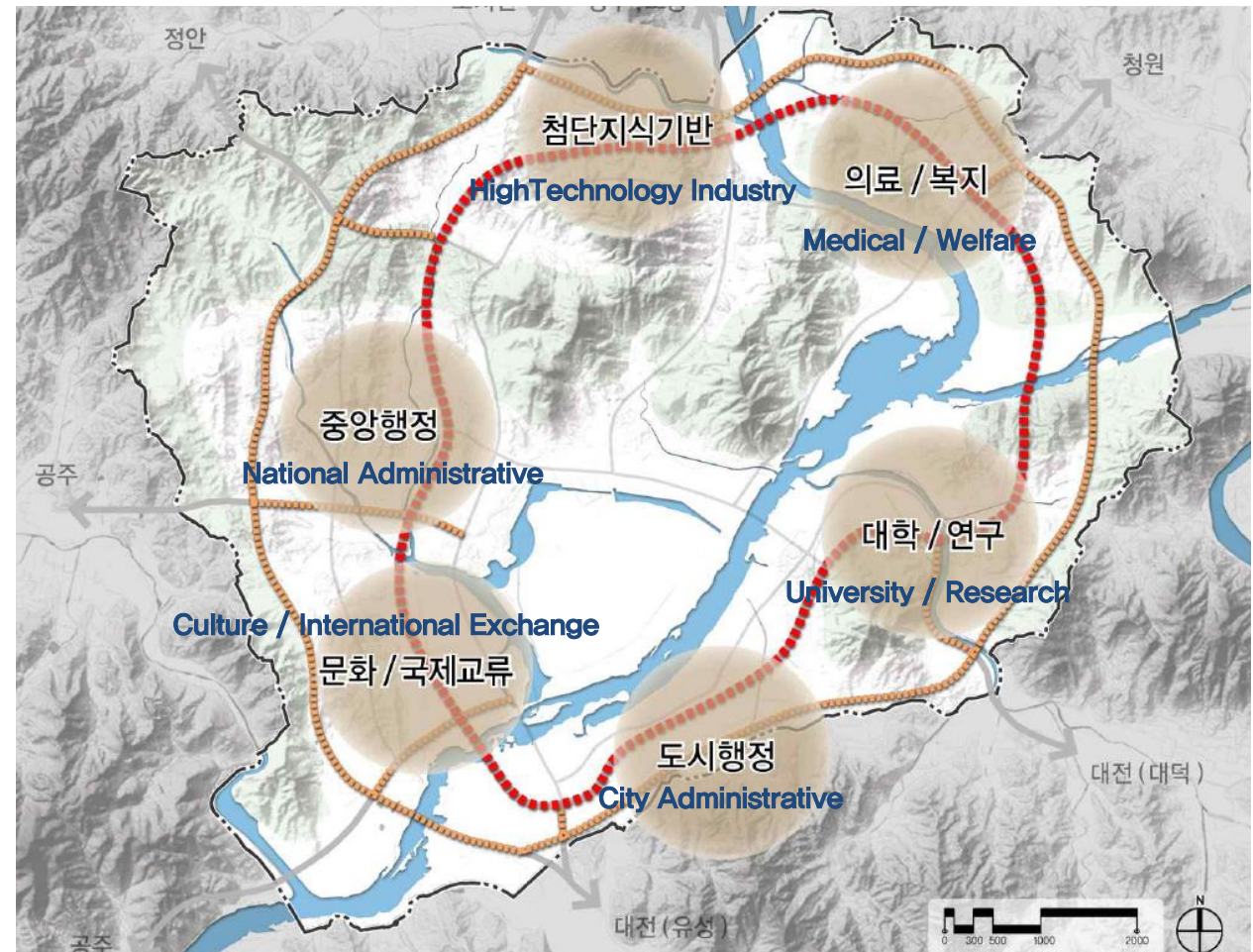


4. Urban Planning

2. Master Plan(2006.9)

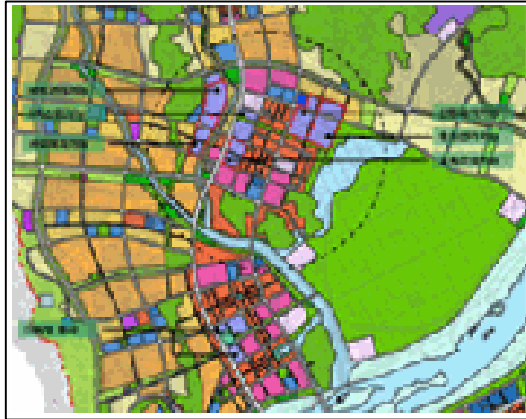
Target Population: 500,000

1. Dispersed Urban Function
2. Eco-friendly Urban Environment
3. Comfortable Housing Environment
4. Human & Eco-friendly Public Transportation
5. Smart Urban Information System

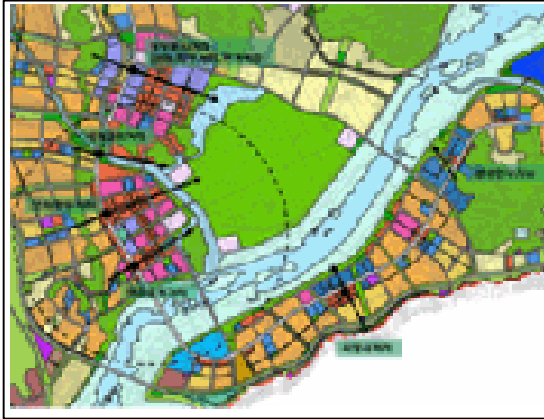


4. Urban Planning

4. Development Plan(2007.02)



〈National Administrative〉



〈Culture〉



〈High Technology Industry〉



〈University and Research〉



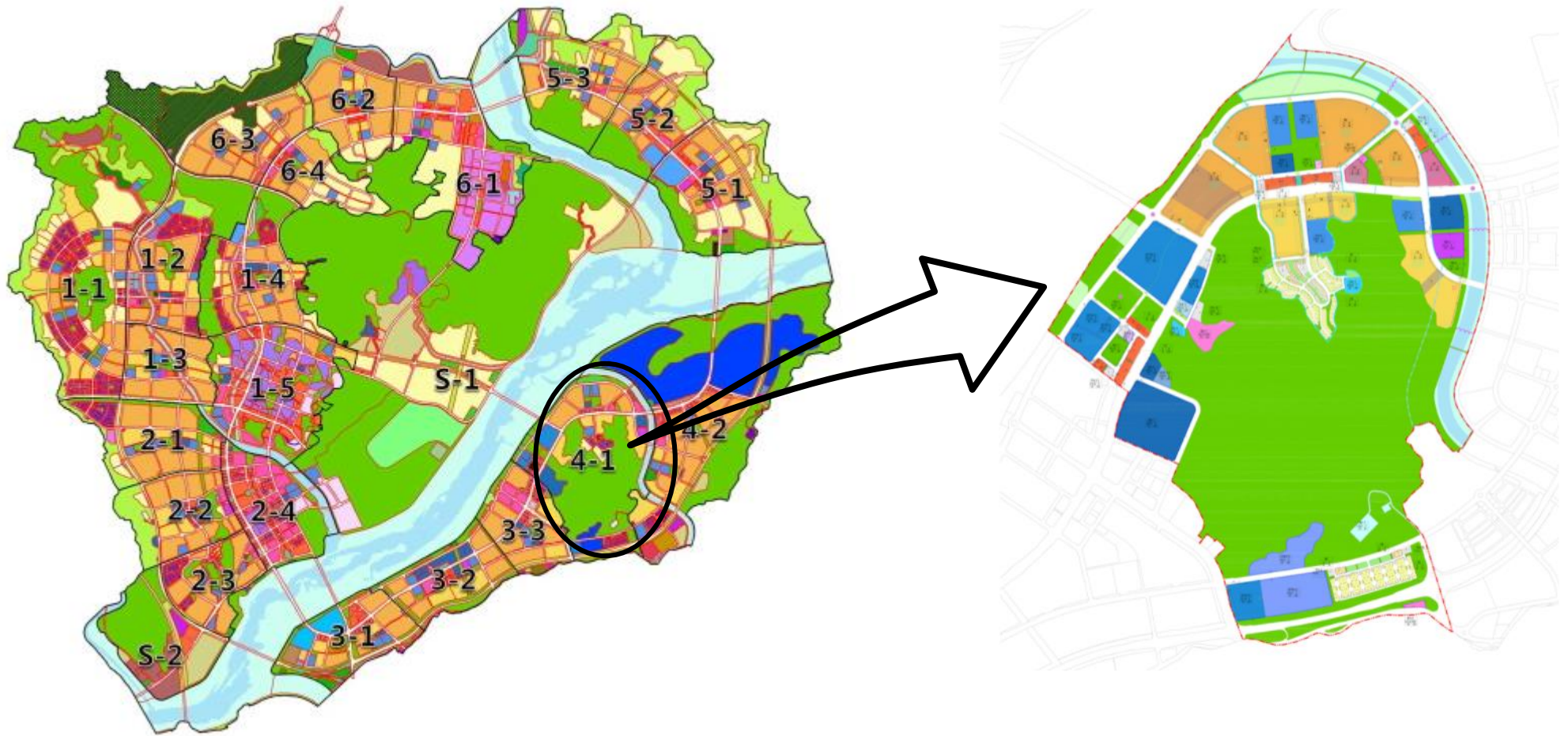
〈Medical and Welfare〉



〈City Administrative〉

4. Urban Planning

5. District Plan



5. Conclusion

1. Carrying out a sustainable & consistent policy
2. Developing an Indonesian model by reviewing foreign cases
3. Attracting private capital
 - Construct an elegant city

Thank You